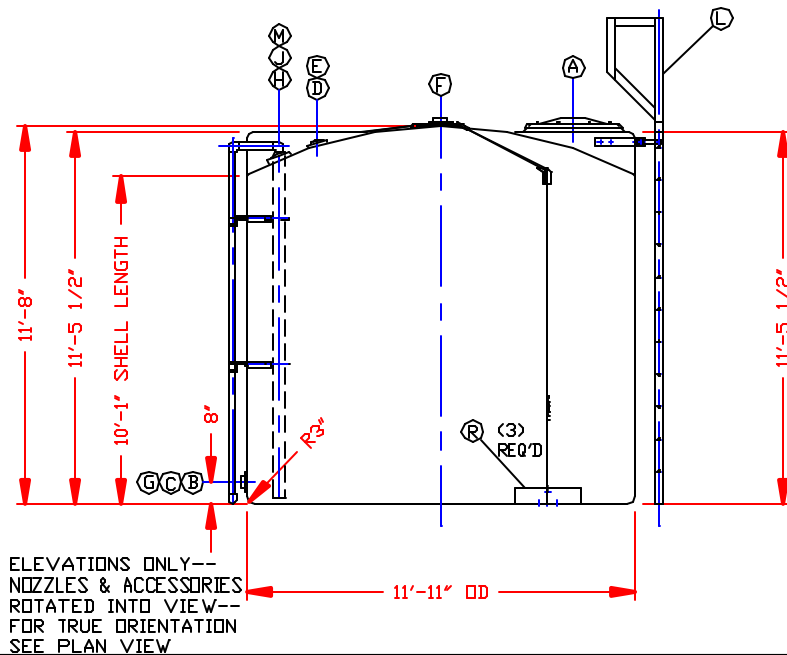
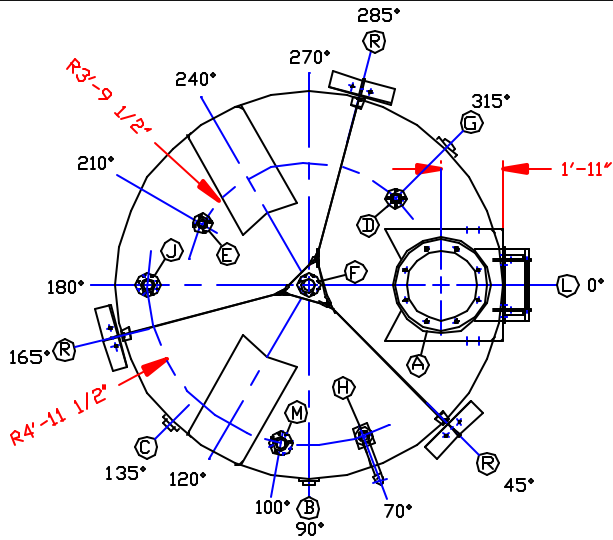


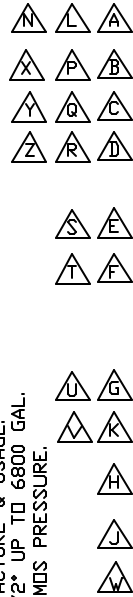
REV 'T' MARK H WAS @ 295° BYMBW 1/14/02 CKJB
 REV 'U' MARK J WAS @ 270° BYMBW 1/14/02 CKJB
 REV 'V' DELETED MARK K. ADDED MARK M BYMBW 1/14/02 CKJB
 REV 'W' MARK R WAS @ 60° 180° 300° BYMBW 1/14/02 CKJB
 REV 'X' MARK C WAS @ 55° BYMBW 1/22/02 CKJB
 REV 'Y' MARK D DID SAY "4" BYMBW 1/22/02 CKJB
 REV 'Z' MARK E DID SAY "4" BYMBW 1/22/02 CKJB
 REV 'AA' ADDED DR-1000 LINER. CHANGED COLOR TO BLACK BYMBW 2/19/02 CKJB



ELEVATIONS ONLY--
 NOZZLES & ACCESSORIES
 ROTATED INTO VIEW--
 FOR TRUE ORIENTATION
 SEE PLAN VIEW



RUNWAY DETAIL
 (2) PLACES



NOTES:
 1. THIS IS A COMPUTER GENERATED DWG. DO NOT REVISE BY HAND.
 2. DIMENSIONS WILL VARY ±3% DUE TO VARIATIONS IN MULTIPLE MOLDS & CONDITIONS PREVALENT DURING MANUFACTURE & USAGE.
 3. MOLDED IN GALLONAGE MARKERS @ APPROX 6 1/2" UP TO 6800 GAL.
 4. TANK DESIGNED FOR 1.35 SPG MAT'L @ 100°F/ATMOS PRESSURE.
 5. TAG ALL PAPERWORK! MARGATE EAST SIDE.

CALCULATED CAPACITIES/ VOLUME IN U.S. GALLONS		
DESIGN CAP	DOME VOL	TOTAL VOL
8249	675	8924

NOZZLE SCHEDULE & ACCESSORIES						
SERVICE	MK	STOCK NO.	SIZE	FITTING	DEG	ELEV
MANWAY	A	3218	24"	(8) BOLT COVER/PE	0°	DOME
DRAIN	B	2078	3"	BOLTED FLANGE FITTING/PVC W/BOLTS/TI W/GSKT/VITON	90°	8'
HYPLO INLET	C	2078	3"	BOLTED FLANGE FITTING/PVC W/BOLTS/TI W/GSKT/VITON	135°	8'
LEVEL SENSOR	D	2828	2"	UNIVERSAL BALL DOME FITTING/PVC W/BOLTS/TI W/GSKT/VITON	315°	DOME
AIR IN	E	2828	2"	UNIVERSAL BALL DOME FITTING/PVC W/BOLTS/TI W/GSKT/VITON	210°	DOME
VENT	F	2100	4"	BOLTED FLANGE FITTING/PVC W/BOLTS/TI W/GSKT/VITON	C-C	DOME
HYPLO OUTLET	G	2100	4"	BOLTED FLANGE FITTING/PVC W/BOLTS/TI W/GSKT/VITON	315°	8'
SIGHT GAGE	H	3356	2"	FLOAT TYPE SIGHT GAGE/PVC W/UNIVERSAL BALL DOME FITTING/PVC W/GSKT/VITON	70°	DOME
		4709		W/(2) COMBINATION PIPE SUPP'T/PE/SS W/BOLTS/TI W/GSKT/VITON		
		3205				
		2759				
FILL LINE	J	2848	3"	UNIVERSAL BALL DOME FITTING/PVC W/BOLTS/TI W/GSKT/VITON	180°	DOME
BLEACH FILL LINE	M	2848	3"	UNIVERSAL BALL DOME FITTING/PVC W/BOLTS/TI W/GSKT/VITON	100°	DOME
LADDER	L	5720	--	11 FT LADDER W/RETURN/FRP W/ATTACHMENT BRACKET/316SS W/BOLTS TI W/GSKT/VITON	0°	TOP SIDE WALL
		99999997				
WIND RESTRAINT	R	99999997	--	130 MPH WIND RESTRAINT SYSTEM CONSISTING OF: (3) RC 6 X 6 X 1/2 X 24 CLIPS (3) EDGE SOFTENERS W/1/4 X 18 X 3 CABLE SLING, CABLE, CLIPS, THIMBLES, SWAGES, TURNBUCKLES & EYEBOLTS/316SS	45° 165° 285°	DOME & BTM SIDE WALL
		5640				

REV 'A' MARK B WAS @ 90° BYMBW 12/26/01 CKJB
 REV 'B' MARK C WAS @ 135° BYMBW 12/26/01 CKJB
 REV 'C' MARK D DID SAY "2" BOLTED FLANGE.." BYMBW 12/26/01 CKJB
 REV 'D' MARK E WAS @ 240° & DID SAY "BOLTED FLANGE.." BYMBW 12/26/01 CKJB
 REV 'E' MARK G WAS @ 315° BYMBW 12/26/01 CKJB
 REV 'F' MARK H WAS @ 295° BYMBW 12/26/01 CKJB
 REV 'G' MARK J WAS @ 240° & HAD EXTERIOR PIPE BYMBW 12/26/01 CKJB
 REV 'H' MARK L DID SAY "MILD STEEL..." BYMBW 12/26/01 CKJB
 REV 'J' MARK R DID SAY "CARBON STEEL..." BYMBW 12/26/01 CKJB
 REV 'K' ADDED MARK K BYMBW 12/26/01 CKJB
 REV 'L' ALL GASKETS WERE "EPDM" BYMBW 12/26/01 CKJB
 REV 'M' TITLE DID SAY "TANK #3" BYMBW 1/7/02 CKJB
 REV 'N' MARK B WAS @ 45° BYMBW 1/14/02 CKJB
 REV 'P' MARK C WAS @ 225° BYMBW 1/14/02 CKJB
 REV 'Q' MARK D WAS @ 120° & DID SAY "BOLTED FLANGE.." BYMBW 1/14/02 CKJB
 REV 'R' MARK E WAS @ 135° BYMBW 1/14/02 CKJB
 REV 'S' MARK G WAS @ 270° BYMBW 1/14/02 CKJB

DWG TITLE
8200 GALLON UPRIGHT TANK - TANK #4

EAST MARGATE 135 SPG/XLPE V/DR-1000 LINER/BLACK
 SERVICE: SODIUM HYPOCHLORITE STOCK NO. 41008200111

SCALE: 1/4" = 1'-0"

DATE: 10/17/01

DR: MB WILKERSON
 CKG: J. BRANTLEY

CLORTEC, DIVISION OF CAPITOL CONTROLS GROUP PO# C2872

SHEET 1 OF 1
 COMPUTER FILE C2872C
 REV AA