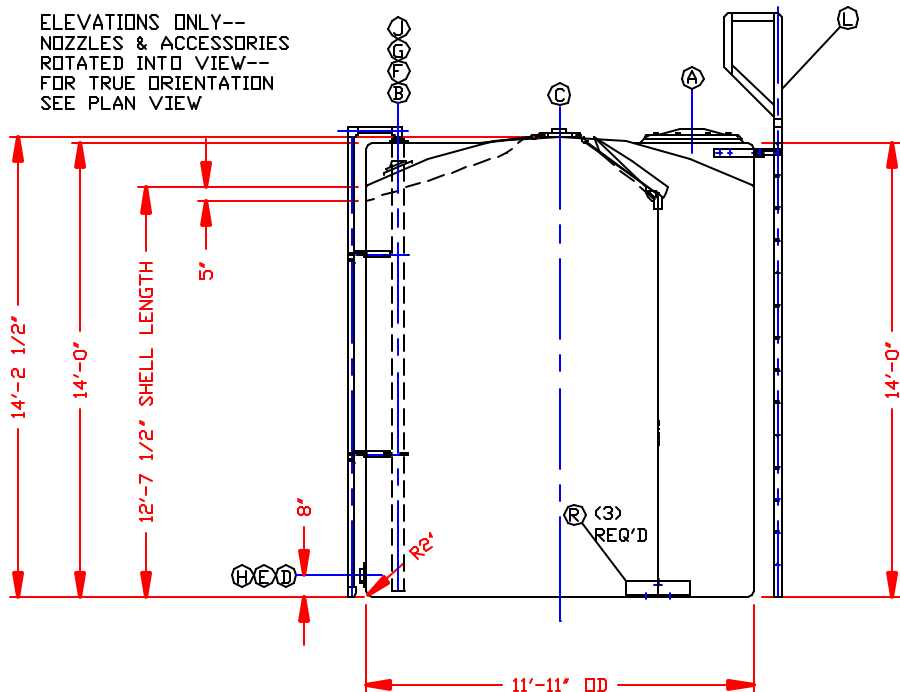


RUNWAY DETAIL  
(2) PLACES

ELEVATIONS ONLY--  
NOZZLES & ACCESSORIES  
ROTATED INTO VIEW--  
FOR TRUE ORIENTATION  
SEE PLAN VIEW



CALCULATED CAPACITIES/ VOLUME IN U.S. GALLONS		
DESIGN CAP	DOME VOL	TOTAL VOL
10309	675	10984

NOZZLE SCHEDULE & ACCESSORIES

SERVICE	MK	STOCK NO.	SIZE	FITTING	DEG	ELEV
MANWAY	A	3218	24"	(8) BOLT COVER/PE	0°	DOME
AIR IN	B	2828	2"	UNIVERSAL BALL DOME FITTING/PVC W/BOLTS/TI W/GSKT/VITON	140°	DOME
VENT	C	2100	4"	BOLTED FLANGE FITTING/PVC W/BOLTS/TI W/GSKT/VITON	0-0	DOME
HYPD OUTLET	D	2100	4"	BOLTED FLANGE FITTING/PVC W/BOLTS/TI W/GSKT/VITON	225°	8'
HYPD INLET	E	2078	3"	BOLTED FLANGE FITTING/PVC W/BOLTS/TI W/GSKT/VITON	315°	8'
SIGHT GAGE	F	3356 4709 3205 2759	2"	FLOAT TYPE SIGHT GAGE/PVC W/UNIVERSAL BALL DOME FITTING/PVC W/GSKT/VITON W/Ø COMBINATION PIPE SUPPT/PE/SS W/BOLTS/TI W/GSKT/VITON	240°	DOME
FILL LINE	G	2848	3"	UNIVERSAL BALL DOME FITTING/PVC W/BOLTS/TI W/GSKT/VITON	270°	DOME
DRAIN	H	2078	3"	BOLTED FLANGE FITTING/PVC W/BOLTS/TI W/GSKT/VITON	45°	8'
LEVEL	J	2828	2"	UNIVERSAL BALL DOME FITTING/PVC W/BOLTS/TI W/GSKT/VITON	30°	DOME
LADDER	L	5723 99999997	--	14 FT LADDER W/RETURN/FRP W/ATTACHMENT BRACKET/316SS W/BOLTS/TI W/GSKT/VITON	0°	TOP SIDE WALL
WIND RESTRAINT	R	99999997 5640	--	130 MPH WIND RESTRAINT SYSTEM CONSISTING OF: (3) RC 6 X 6 X 1/2 X 24 CLIPS (3) EDGE SOFTENERS W/5/16 X 18 X 3 CABLE SLING, CABLE, CLIPS, THIMBLES, SWAGES, TURNBUCKLES & EYEBOLTS/316SS	60° 180° 300°	DOME & BTM SIDE WALL

NOTES:

- THIS IS A COMPUTER GENERATED DWG. DO NOT REVISE BY HAND.
- DIMENSIONS WILL VARY ±3% DUE TO VARIATIONS IN MULTIPLE MOLDS & CONDITIONS PREVALENT DURING MANUFACTURE & USAGE.
- MOLDED IN GALLONAGE MARKERS @ APPROX 3 1/2" UP TO 9200 GAL.
- TANK DESIGNED FOR 1.35 SpG MAT'L @ 100°F/ATMOS PRESSURE.
- TAG ALL PAPERWORK; MARGATE EAST SIDE.

- REV "A" MARK B WAS LOCATED @ 120° DID SAY "BLTD FLG." BY:MBW 12/26/01 CK:JB
- REV "B" MARK F WAS LOCATED @ 270° BY:MBW 12/26/01 CK:JB
- REV "C" MARK G WAS LOCATED @ 240° & DID EXTERIOR PIPE BY:MBW 12/26/01 CK:JB
- REV "D" MARK L DID SAY "MILD STEEL..." BY:MBW 12/26/01 CK:JB
- REV "E" MARK R DID SAY "CARBON STEEL..." BY:MBW 12/26/01 CK:JB
- REV "F" ADDED MARK H BY:MBW 12/26/01 CK:JB
- REV "G" ADDED MARK J BY:MBW 12/26/01 CK:JB
- REV "H" ALL GASKETS WERE "EPDM" BY:MBW 12/26/01 CK:JB
- REV "J" MARK B DID SAY "4" BY:MBW 1/22/02 CK:JB
- REV "K" MARK J DID SAY "4" & WAS @ 45° BY:MBW 1/22/02 CK:JB
- REV "L" ADDED DR-1000 LINER, CHANGED COLOR TO BLACK BY:MBW 2/19/02 CK:JB

DWG TITLE  
10300 GALLON UPRIGHT TANK - TANK #2

WEST MARGATE SERVICE: SODIUM HYPOCHLORITE 1.35 SpG/XLPE V/DR-1000 LINER/BLACK STOCK NO. 41010300111

SCALE: 1/4"=1'-0"

DATE: 10/18/01

DR: MB WILKERSON  
CHK: J. BRANTLEY

CLORTEC, DIVISION OF CAPITOL CONTROLS GROUP PD# C2872

SHEET 1 OF 1  
COMPUTER FILE C2872E  
REV L