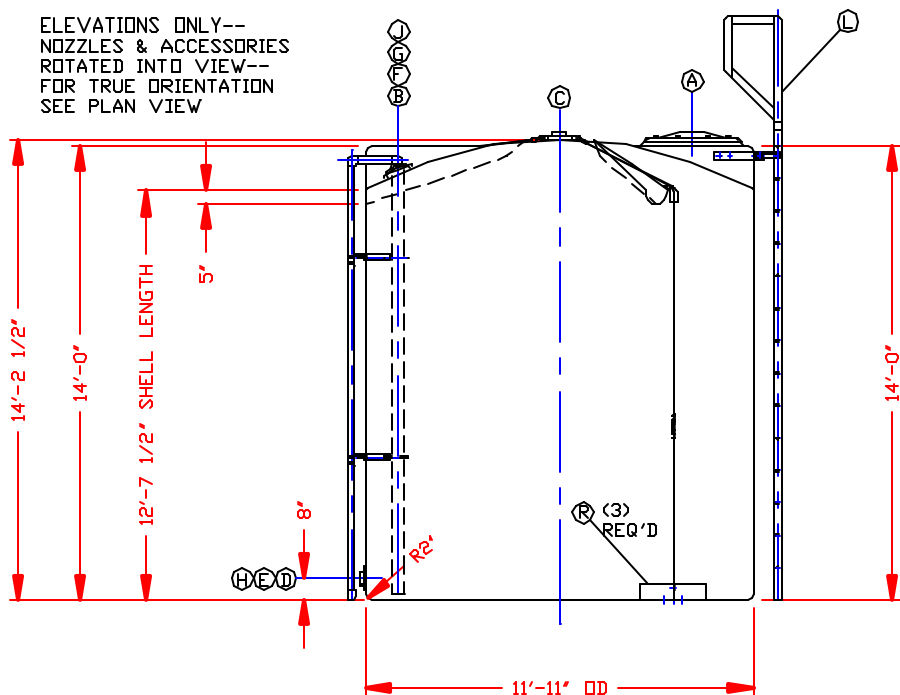


RUNWAY DETAIL  
(2) PLACES

ELEVATIONS ONLY--  
NOZZLES & ACCESSORIES  
ROTATED INTO VIEW--  
FOR TRUE ORIENTATION  
SEE PLAN VIEW



CALCULATED CAPACITIES/ VOLUME IN U.S. GALLONS		
DESIGN CAP	DOME VOL	TOTAL VOL
10309	675	10984

NOZZLE SCHEDULE & ACCESSORIES

SERVICE	MK	STOCK NO.	SIZE	FITTING	DEG	ELEV
MANWAY	A	3218	24"	(8) BOLT COVER/PE	0°	DDOME
AIR IN	B	2828	2"	UNIVERSAL BALL DOME FITTING/PVC W/BOLTS/TI W/GSKT/VITON	140°	DDOME
VENT	C	2100	4"	BOLTED FLANGE FITTING/PVC W/BOLTS/TI W/GSKT/VITON	CL-CL	DDOME
HYPD OUTLET	D	2100	4"	BOLTED FLANGE FITTING/PVC W/BOLTS/TI W/GSKT/VITON	180°	8'
HYPD INLET	E	2078	3"	BOLTED FLANGE FITTING/PVC W/BOLTS/TI W/GSKT/VITON	135°	8'
SIGHT GAGE	F	3356 4709 3205 2759	2"	FLOAT TYPE SIGHT GAGE/PVC W/UNIVERSAL BALL DOME FITTING/PVC W/GSKT/VITON W/COMBINATION PIPE SUPPT/PE/SS W/BOLTS/TI W/GSKT/VITON	205°	DDOME
FILL LINE	G	2848	3"	UNIVERSAL BALL DOME FITTING/PVC W/BOLTS/TI W/GSKT/VITON	215°	DDOME
DRAIN	H	2078	3"	BOLTED FLANGE FITTING/PVC W/BOLTS/TI W/GSKT/VITON	45°	8'
LEVEL	J	2828	2"	UNIVERSAL BALL DOME FITTING/PVC W/BOLTS/TI W/GSKT/VITON	30°	DDOME
LADDER	L	5723 99999997	--	14 FT LADDER W/RETURN/FRP W/ATTACHMENT BRACKET/316SS W/BOLTS/TI W/GSKT/VITON	0°	TOP SIDE WALL
WIND RESTRAINT	R	99999997 5640	--	130 MPH WIND RESTRAINT SYSTEM CONSISTING OF: (3) RC 6 X 6 X 1/2 X 24 CLIPS (3) EDGE SOFTENERS W/5/16 X 18 X 3 CABLE SLING, CABLE, CLIPS, THIMBLES, SWAGES, TURNBUCKLES & EYEBOLTS/316SS	70° 190° 310°	DDOME & BTM SIDE WALL

- NOTES:
- THIS IS A COMPUTER GENERATED DWG. DO NOT REVISE BY HAND.
  - DIMENSIONS WILL VARY ±3% DUE TO VARIATIONS IN MULTIPLE MOLDS & CONDITIONS PREVALENT DURING MANUFACTURE & USAGE.
  - MOLDED IN GALLONAGE MARKERS @ APPROX 3 1/2" UP TO 9200 GAL.
  - TANK DESIGNED FOR 1.35 SpG MAT'L @ 100°F/ATMOS PRESSURE.
  - TAG ALL PAPERWORK: MARGATE EAST SIDE.

- REV "A" MARK B WAS LOCATED @ 120°/DID SAY "BLTD FLG." BY:MBW 12/26/01 CK:JB
- REV "B" MARK F WAS LOCATED @ 270° BY:MBW 12/26/01 CK:JB
- REV "C" MARK G WAS LOCATED @ 240° & DID HAVE EXT DROP PIPE BY:MBW 12/26/01 CK:JB
- REV "D" MARK L DID SAY "MILD STEEL..." BY:MBW 12/26/01 CK:JB
- REV "E" MARK R DID SAY "CARBON STEEL..." BY:MBW 12/26/01 CK:JB
- REV "F" ADDED MARK H BY:MBW 12/26/01 CK:JB
- REV "G" ADDED MARK J BY:MBW 12/26/01 CK:JB
- REV "H" ALL GASKETS WERE "EPDM" BY:MBW 12/26/01 CK:JB
- REV "J" MARK B DID SAY "4" BY:MBW 1/22/02 CK:JB
- REV "K" MARK J DID SAY "4" & WAS @ 45° BY:MBW 1/22/02 CK:JB
- REV "L" ADDED DR-1000 LINER, CHANGED COLOR TO BLACK BY:MBW 2/19/02 CK:JB

DWG TITLE  
10300 GALLON UPRIGHT TANK - TANK #1

WEST MARGATE SERVICE: SODIUM HYPOCHLORITE 1.35 SpG/XLPE V/DR-1000 LINER/BLACK STOCK NO. 41010300111

SCALE: 1/4"=1'-0"

DATE: 10/18/01

DR: MB WILKERSON  
CKG: J. BRANTLEY

CLORTEC, DIVISION OF CAPITOL CONTROLS GROUP PD# C2872

SHEET 1 OF 1  
COMPUTER FILE C2872D  
REV L